

1 2 3 4 5 6 7 8

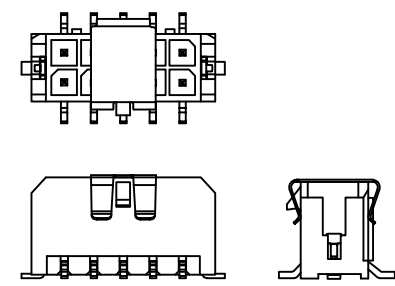
REV	LOCATIONS	DESCRIPTION	DATE	REVISER	APPD
1	△	Dimensions change	16/DEC/21	MATT	CHERRY
2	△	Structure & the material change	09/MAR/22	MATT	CHERRY
3	△	Add dimensions and the view with Cap	31/JUL/24	MATT	LEO

Electrical

Current Rating: 5.0A AC(rms)/DC
 Voltage Rating: 250V AC(rms)/DC
 Contact Resistance: 10 mΩ Max
 Insulation Resistance: 1000 MΩ MIN
 Withstanding Voltage: 1000V AC r.m.s
 Temperature Range—Operating: -40°C~+105°C

Material and Plating

△ Housing: PA9T (UL 94V-0)
 Contact Pin: Brass
 Plating: Tin Plated

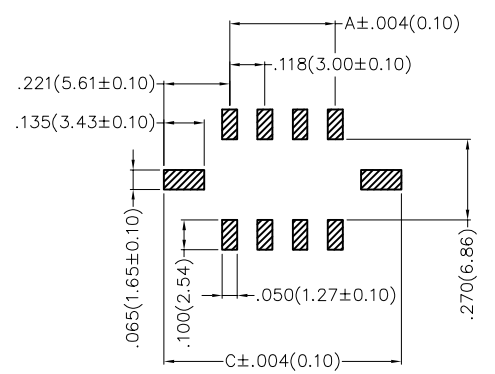
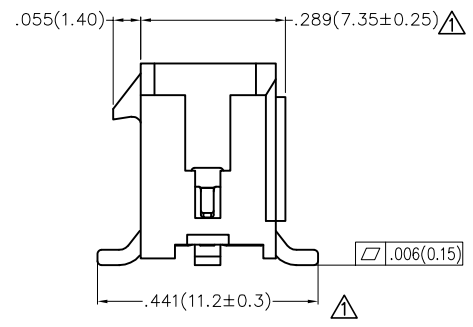
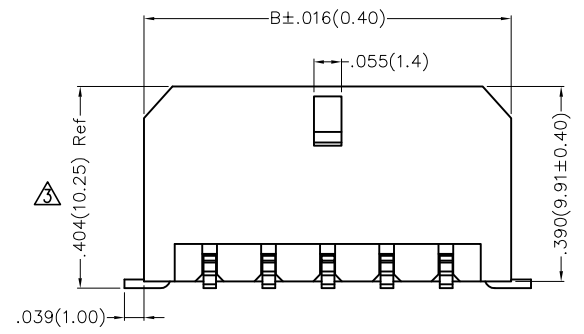
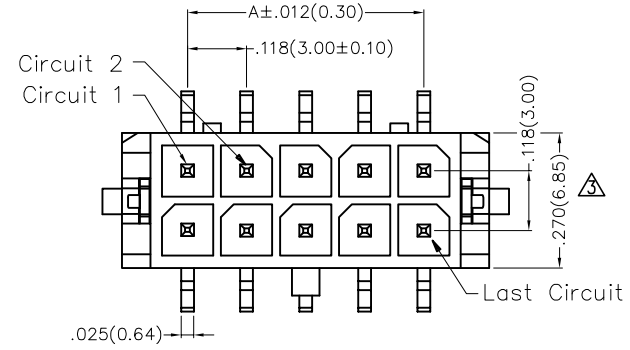


△ With Cap View

Ordering Information

FWF 300 16 — D XX S 2 3 K6 M
 1 2 3 4 5 6 7 8 9 10

1 Category FWF—Wafer	2 Series Number 300—Pitch3.0mm	3 Distinction No. 16	4 Row Option D—Double Row	5 Circuits XX	6 Entry Angle S—180° Vertical
7 Plating 2—Tin Plated	8 Material—Resin 3— PA9T △	9 Color—Resin K6—Black	10 Packaging M—Reel		



Recommended P.C.Board Layout

THIRD ANGLE PROJECTION		GENERAL TOLERANCES (UNLESS SPECIFIED)		APPROVE BY	DATE	PART NO.	ITEM NO.	TXGA	
DESIGN UNITS Inch (metric)	X.±.012(0.30)	X.±5°	CHECKED BY	FRANK	01/JUL/13	FWF30016—DXXS23K6M	FWF30016	Building Technology Cornerstone	
	X.X±.008(0.20)	.X±2'		CHERRY	01/JUL/13			TITLE	REV 3
SCALE	SIZE	X.XX±.006(0.15)	.XX±1'	DRAWN BY	DATE	THIS DRAWING CONTAINS INFORMATION THAT IS PROPRIETARY TO TXGA INDUSTRIAL ELECTRONICS(S.Z)CO.,LTD AND SHOULD NOT BE USED WITHOUT WRITTEN PERMISSION			
5:1	A4	X.XXX±.004(0.10)	.XXX±0.5'	KATE	01/JUL/13				

1 2 3 4 5 6 7 8

1 | 2 | 3 | 4 | 5 | 6 | 7 | 8

REV	LOCATIONS	DESCRIPTION	DATE	REVISER	APPD

A

B

C

D

E

F

A

B



C

D

E

F

Circuits (n)	Part No.	Dimensions(in/mm)		
		A	B	C
2	FWF30016-D02S23K6M	—	.262(6.65)	.441(11.20)
4	FWF30016-D04S23K6M	.118(3.00)	.380(9.65)	.559(14.20)
6	FWF30016-D06S23K6M	.236(6.00)	.498(12.65)	.677(17.20)
8	FWF30016-D08S23K6M	.354(9.00)	.616(15.65)	.795(20.20)
10	FWF30016-D10S23K6M	.472(12.00)	.734(18.65)	.913(23.20)
12	FWF30016-D12S23K6M	.591(15.00)	.852(21.65)	1.031(26.20)
14	FWF30016-D14S23K6M	.709(18.00)	.970(24.65)	1.150(29.20)
16	FWF30016-D16S23K6M	.827(21.00)	1.089(27.65)	1.268(32.20)
18	FWF30016-D18S23K6M	.945(24.00)	1.207(30.65)	1.386(35.20)
20	FWF30016-D20S23K6M	1.063(27.00)	1.325(33.65)	1.504(38.20)
22	FWF30016-D22S23K6M	1.181(30.00)	1.443(36.65)	1.622(41.20)
24	FWF30016-D24S23K6M	1.299(33.00)	1.561(39.65)	1.740(44.20)

 THIRD ANGLE PROJECTION	GENERAL TOLERANCES (UNLESS SPECIFIED)		APPROVE BY FRANK	DATE 01/JUL/13	PART NO. FWF30016-DXXS23K6M	ITEM NO. FWF30016	 Building Technology Cornerstone	
	X.±.012(0.30)	X'.±5'	CHECKED BY CHERRY	DATE 01/JUL/13	TITLE Wire to Board (Wafer) Pitch 3.0mm 180° Vertical (SMT)			REV 3
	DESIGN UNITS Inch (metric)	X.XX±.008(0.20)	.X'±2'	DRAWN BY KATE	DATE 01/JUL/13	THIS DRAWING CONTAINS INFORMATION THAT IS PROPRIETARY TO TXGA INDUSTRIAL ELECTRONICS(S.Z)CO.,LTD AND SHOULD NOT BE USED WITHOUT WRITTEN PERMISSION		SHEET NO. 2/2
	SCALE 5:1	SIZE A4	X.XX±.006(0.15)	.XX'±1'				

1 | 2 | 3 | 4 | 5 | 6 | 7 | 8